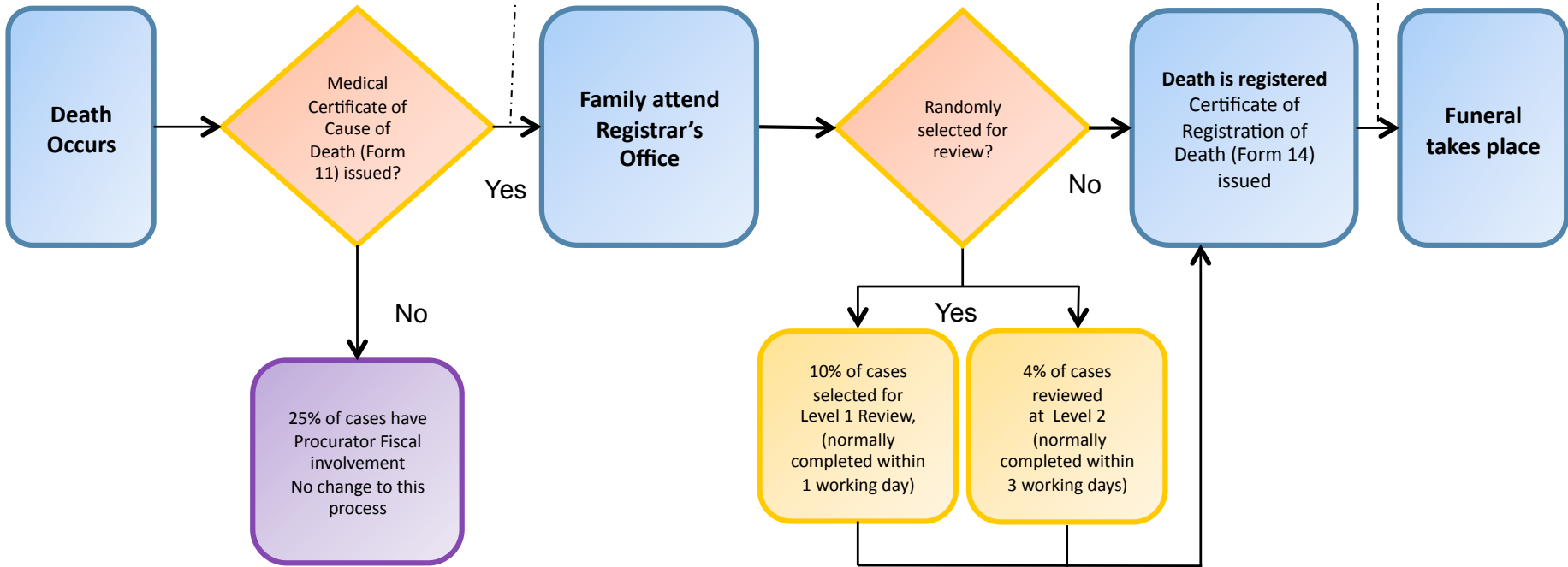


Family in communication with Funeral Director

Once the MCCD Form 11 has been issued initial funeral arrangements can be made. This includes collection, embalming & viewing. Arrangements CAN be confirmed but ONLY if sufficient time is allowed for any possible review

Once the Form 14 has been issued, the case is clear and the funeral arrangements can go ahead



Medical Certificate of Cause of Death (Form 11)
 If completed electronically a hard copy is issued to family plus an eMCCD is sent direct to the Registrar's (NRS) and may be selected for review at this point

