



Dear Member

[Eastern Branch Meeting, Tuesday 12th December 2017](#)

I am writing to invite you to the next meeting of the Eastern Regional Branch. It will take place on Tuesday 12th December 2017 at Wellingborough's new facility, namely Nene Valley Crematorium, at 305 Doddington Road, Wellingborough, Northamptonshire, NN8 2NX. For directions and those using Sat Navs, please link to www.multimap.co.uk or www.greenflag.co.uk.

"Nene Valley Crematorium was opened on 19th September 2016 and is the result of the Borough Council of Wellingborough's vision to invest taxpayers' money into a valuable service for the local community and beyond, which will eliminate the long road journeys to crematoria in other districts. It was also their wish to reduce the waiting times for Wellingborough and the wider community. The building has been designed to reflect light and an airy interior, with views over open countryside. It is intended to provide a peaceful atmosphere, uplifting the spirits of those who enter."

Following refreshments on arrival at Nene Valley, I have arranged for members and their guests to receive a tour of Wesley Media, based at nearby Kettering.

On our return to the Crematorium, Steve and I will show you round our facility, followed by a buffet lunch, kindly sponsored by Jim Thompson of Teleshore (UK), which will be a working late lunch (due to homemade cake earlier). Our Keynote Speaker, Tim Morris and Guest Speaker Julie Dunk will address us about their ICCM outgoing and incoming roles respectively. Jim will be present on the day to answer any questions you may have, or just to have a friendly catch up.

The day will conclude with the regional meeting, chaired by Steve Perry, due to the recent retirement of Steve Kemp.

We look forward to receiving any topics you wish to be raised, for placing on the agenda, for a sharing of past experiences and future ideas.

Please RSVP by Friday 2 December 2017 to the bereavement services team via enquiries@nenevalleycrematorium.co.uk or 01933 229660.

We look forward to hearing from you and will circulate the agenda prior to the meeting.

With very best regards

Tracy Lawrence
Eastern Branch Secretary
Nene Valley Crematorium
305 Doddington Road
Wellingborough
Northants
NN8 2NX

INSTITUTE OF CEMETERY AND CREMATORIUM MANAGEMENT

Registered Office: ICCM National Office, City of London Cemetery, Aldersbrook Road, Manor Park, E12 5DQ

Tel: 020 8989 4661 Fax: 020 8989 6112 Website: www.iccm-uk.com

A Company Limited by Guarantee Founded 1913 – Incorporated 1958 London Register No. 610299



ITINERARY

Tuesday 12th December 2017

10:00 - Members and Guests assemble, tea and coffee (including homemade cakes) will be provided.

11:00 – Leave for Tour of Wesley Media.

13.00 – Welcome & Introduction by the Chair, Steve Perry

➤ Tour of Crematorium and Anniversary Garden.

13:30 – Keynote and guest speakers – The ICCM's Tim Morris and Julie Dunk.

14:00 – Buffet lunch

14.30 – Eastern Branch Meeting.

15.30 – Close meeting.

EASTERN BRANCH MEETING Agenda

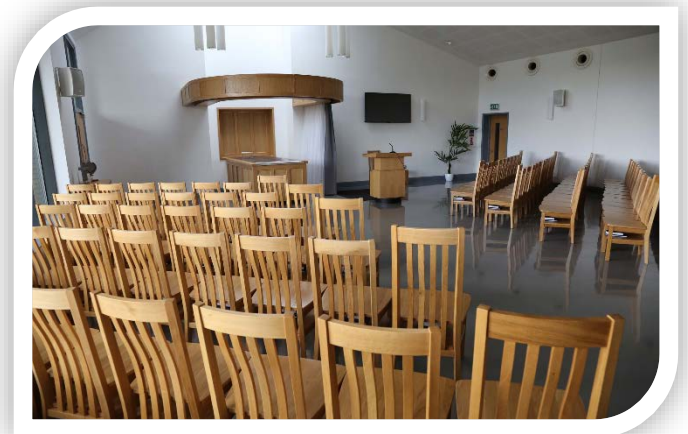
Apologies:

1. Welcome by the Chairman of the Branch.
2. Apologies received.
3. New Members to the Branch.
4. ICCM updated issues – Tim Morris.
5. Any Other Business.
6. Vote of Thanks.
7. Date for next quarterly meeting (ideas/preference).
8. Close of Meeting.

ICCM Eastern Branch Meeting Tuesday 12th December 2017
by kind invitation of Tracy Lawrence, Nene Valley Crematorium



Nene Valley Crematorium: A tranquil setting that respects and accommodates the wishes and needs for all our community.



We will offer a look around this new crematorium, as well as a tour of Wesley Media, the Key Speaker is Tim Morris with Guest Speaker Julie Dunk.

To attend please contact any member of the bereavement team at enquiries@nenevalleycrematorium.co.uk or Telephone 01933 229660

Registered Office: ICCM National Office, City of London Cemetery, Aldersbrook Road, London E12 5DQ